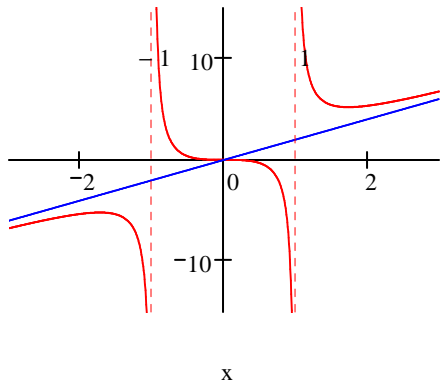
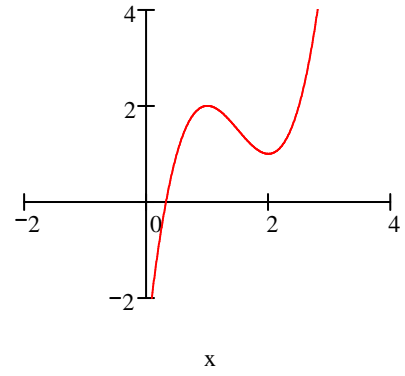


$$\frac{2x^3}{x^2-1}$$

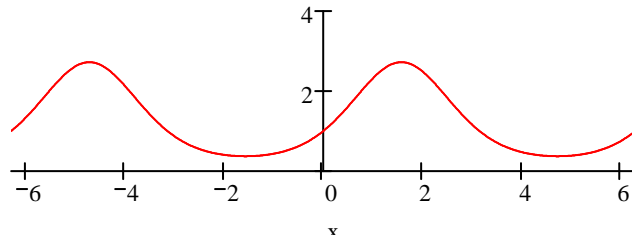
$$\frac{2x}{x^2-1}$$



$$2x^3 - 9x^2 + 12x - 3$$

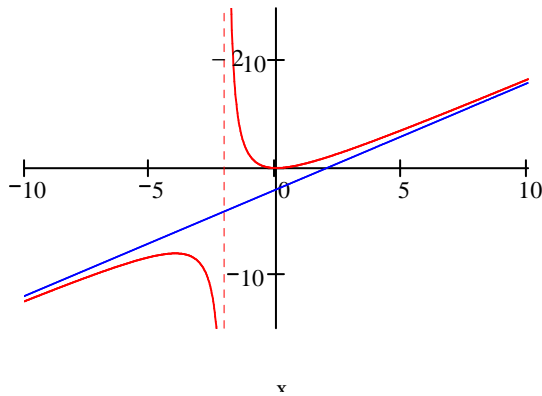


$$e^{\sin(x)}$$

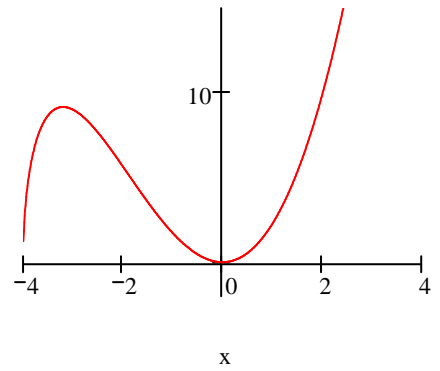


$$\frac{x^2}{x+2}$$

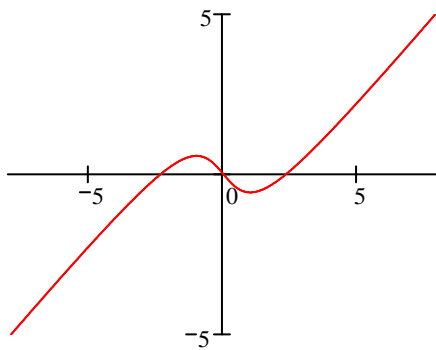
$$\frac{x-2}{x+2}$$



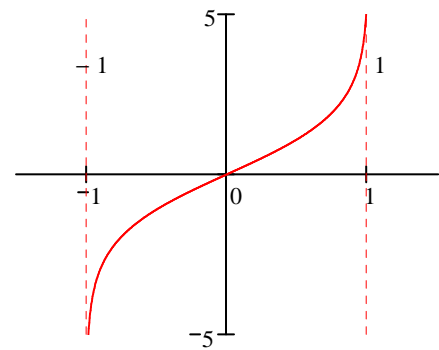
$$x^2 \cdot \sqrt{x+4}$$



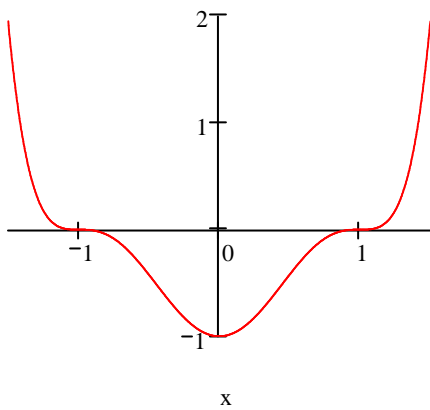
$$x - 2 \operatorname{atan}(x)$$



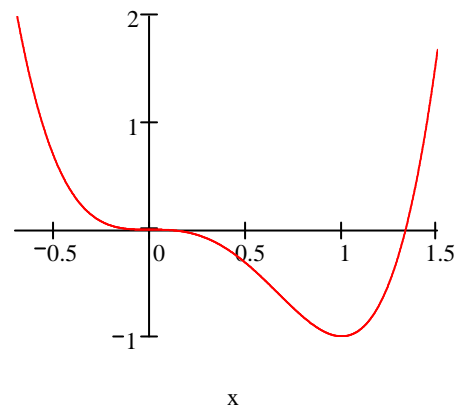
$$\ln\left(\frac{1+x}{1-x}\right)$$



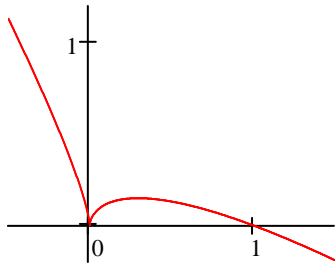
$$\left(\frac{x^2-1}{x^2-1}\right)^3$$



$$3x^4 - 4x^3$$

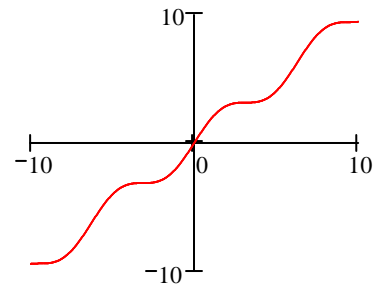


$$\sqrt[3]{x^2-x}$$



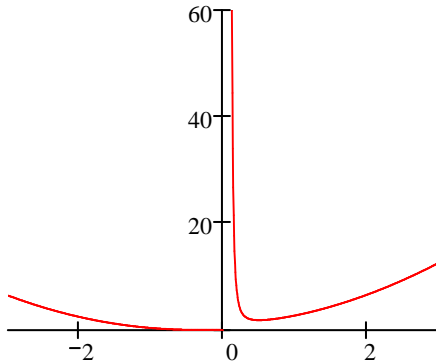
x

$$x+\sin(x)$$



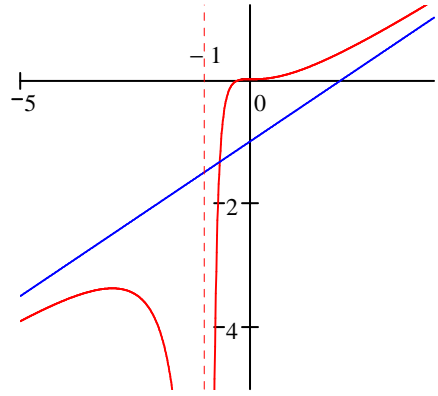
x

$$x^2 e^{\frac{1}{x}}$$

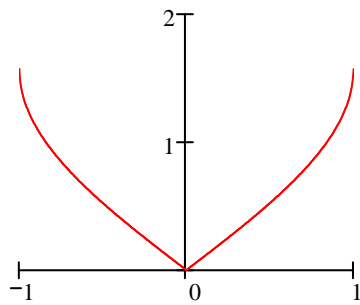


x

$$\frac{x^3}{2(x+1)^2}$$

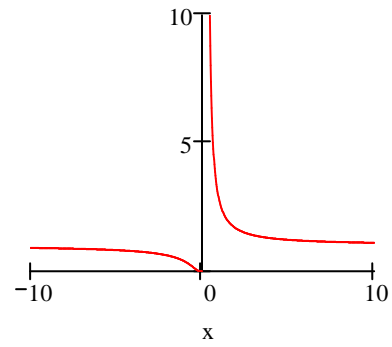


$$\sin(|x|)$$



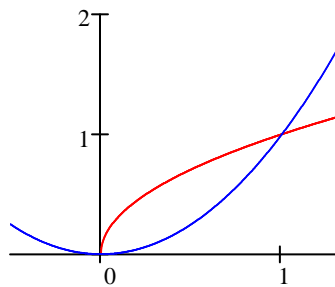
x

$$e^{\frac{1}{x}}$$



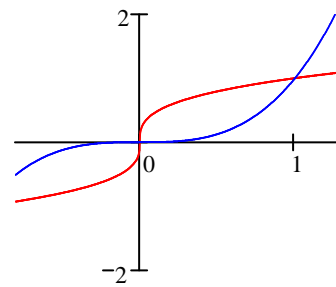
x

$$\frac{\sqrt{x}}{x^2}$$

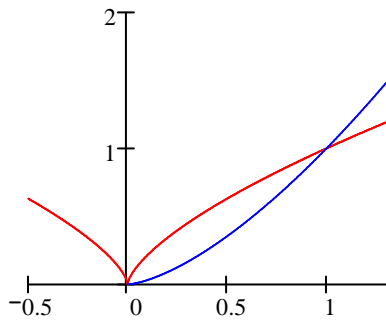


x

$$\frac{\sqrt[3]{x}}{x^3}$$

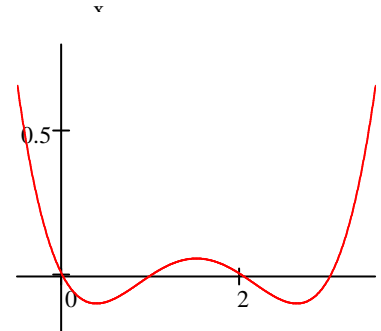


$$\frac{\sqrt[3]{x^2}}{\sqrt{x^3}}$$

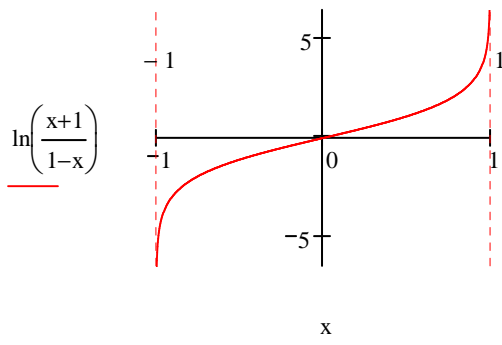


x

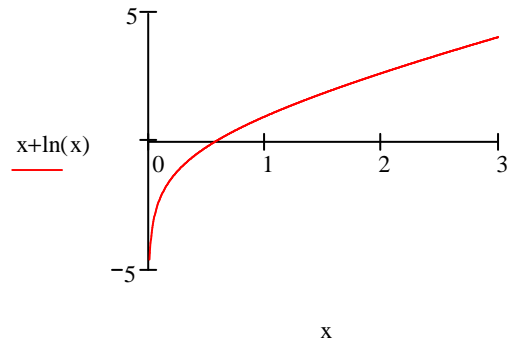
$$\frac{1}{10}x \cdot (x-1) \cdot (x-2) \cdot (x-3)$$



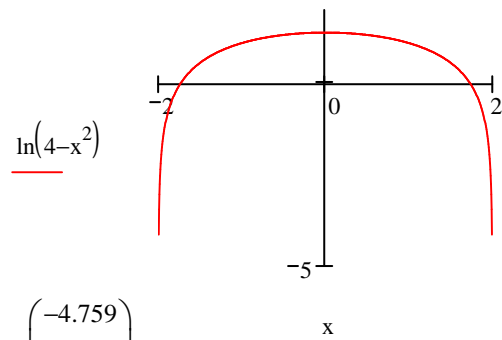
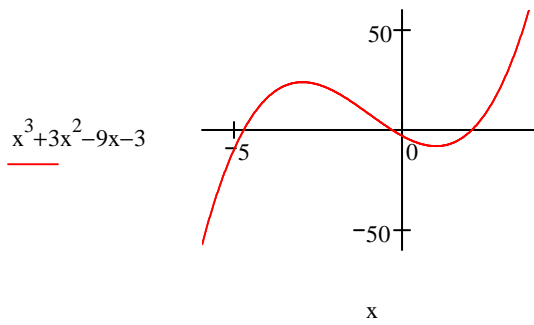
x



$$\lim_{x \rightarrow 1^-} \ln\left(\frac{x+1}{1-x}\right) \rightarrow \infty$$



$$\lim_{x \rightarrow \infty} \frac{x + \ln(x)}{x} \rightarrow 1 \quad \lim_{x \rightarrow \infty} x + \ln(x) - x \rightarrow \infty$$



$$\text{polyroots}\left(\begin{pmatrix} -3 \\ -9 \\ 3 \\ 1 \end{pmatrix}\right) = \begin{pmatrix} -4.759 \\ -0.305 \\ 2.064 \end{pmatrix}$$

